

# WHAT ARE WE PROPOSING TO BUILD AND OPERATE?

Field builds and operates large batteries which store energy to help create a greener, more stable electricity grid.

We'd like to build one of these batteries, Field Beauly, on land west of the A862 and east of the River Beauly, IV4 7BE.

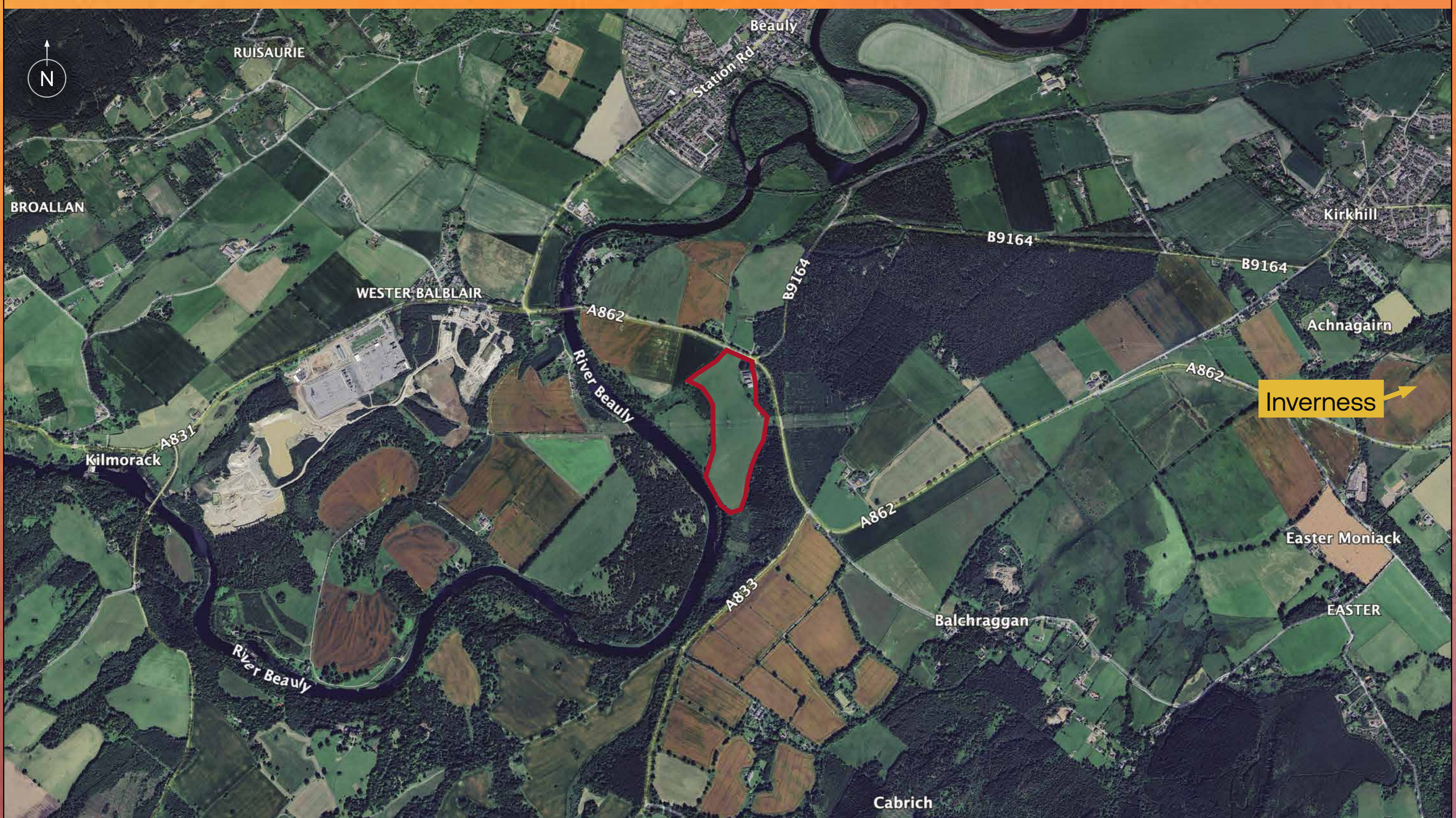
Field Beauly will be connected via underground cable to the existing Beauly Substation. Detailed design work for the cable route of roughly 2 km will be completed by SSE in the coming months. This will be consented and constructed by SSE separately from the Field Beauly project.

Field Beauly would be capable of storing up to 100 MW of electricity.

This is expected to avoid up to 700,000 tonnes of CO<sub>2</sub>e emissions during the first 20 years of operation.

This would be achieved by storing electricity when renewable energy generation is high, and supplying the grid with electricity when renewable energy generation is low, thereby reducing reliance on high carbon energy sources.

Field currently operates two sites, Field Oldham, a 20 MW battery which has been operating since Autumn 2022, and Field Gerrards Cross, which started operating in April 2024. Field Beauly would join these sites as part of a nationwide network which, together, will help the UK reach net zero.



# INDICATIVE TIMELINE



*Early 2024*

Early environmental assessments and design work



*28 May 2024*

Public consultation event 1



*21 August 2024*

Public consultation event 2



*Autumn 2024*

Submission of planning application



*2025*

Determination of planning application



*2027 onwards*

Construction and operation

# FIELD BEAULY

Field Beauly would be located west of the A862 and east of the River Beauly.

We'll provide landscaping to reduce visual impacts and we'll also provide biodiversity enhancements to ensure we are having a positive ecological effect on the land we use.

Field Beauly will be made up of the following components:

- **Battery energy storage units**, which will be used to store the energy from the grid.
- **Power conversion systems** (including inverters and transformers), which convert energy from alternating current to direct current, so that it can be stored by the batteries.

- An **on-site substation**, which either steps up or steps down the voltage of the energy being stored.
- **Site access tracks** to allow vehicles (including emergency vehicles) to safely get around the site.
- **Drainage arrangements** to allow surface water to drain from the site at the same rate as the existing site.
- **Site security**, including CCTV, fencing and lighting.
- **Landscaping**, to reduce visual impacts and contribute to biodiversity enhancement.



# STORING ENERGY IN THE HIGHLANDS

Scotland has set a target to become net zero by 2045.\* Batteries enable much greater use of renewable energy, and therefore play an important role in helping Scotland reach net zero.

Batteries are a vital part of how we can make the most of renewable energy, which is why they are integral to the Highland Council's "Future Highland" Programme. The Highland Council stated in their Net Zero Strategy (2023) that:

*"The Council's "Future Highland" Programme sets out a vision of Highland, a centre for global renewable energy, by capitalising on our areas of immense natural capital to deliver alternative energy solutions including developing solar, hydrogen, Hydro, wind and wave solutions."*



\*<https://www.gov.scot/policies/climate-change>

# WHY DO WE NEED BIG BATTERIES?

To reach net zero, increase energy security and help reduce energy bills, we need to store renewable energy and improve the electricity grid's stability and reliability.

Our batteries are designed to fill gaps in the UK's electricity supply by charging up when renewable energy is being produced (such as on windy or sunny days) and discharging energy back into the grid when needed (e.g. when the wind isn't blowing, the sun isn't shining, or we aren't able to import enough energy from elsewhere). This ensures plenty of electricity is available for people to make their morning cuppa, even on a calm, overcast winter's day.

These batteries work a lot like the batteries you use at home, only instead of using our batteries to power a torch or TV remote, we operate large, 'grid scale' batteries.

This means we can rely more on renewable energy and less on expensive fossil fuels to provide electricity to thousands of homes and businesses.

Batteries are also very good at keeping the grid stable, by maintaining a constant and predictable supply of electricity to the grid, at the right frequency.

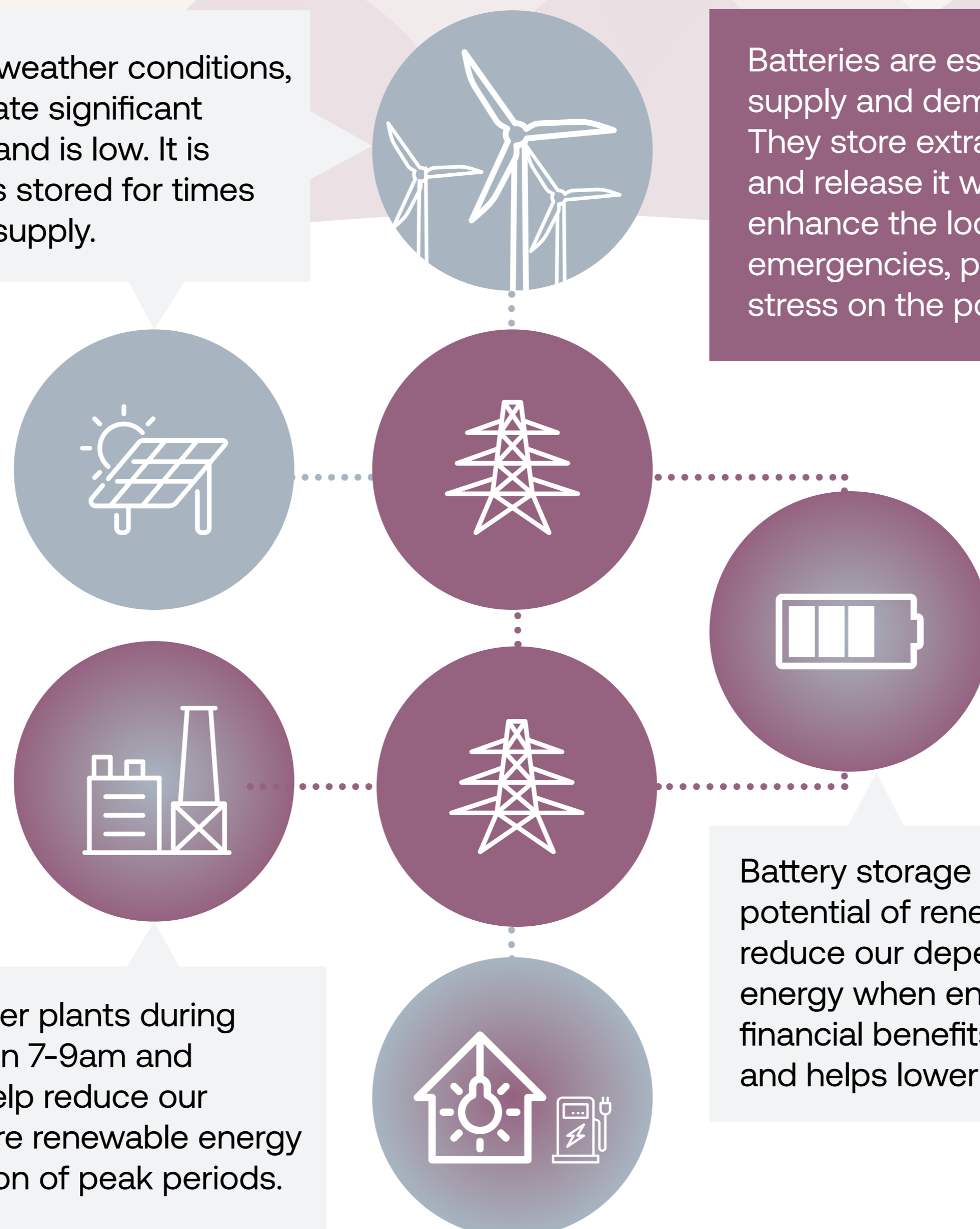
Changes in the supply and demand of electricity on the network create changes in this electrical frequency. This needs to be closely monitored, as if frequency is too high or too low, the network can't operate properly. Field Beauly will help to keep this frequency at the right level, which in turn helps reduce the chances of network disruptions or blackouts.

Wind and solar energy rely on weather conditions, meaning they can often generate significant amounts of energy when demand is low. It is important this excess energy is stored for times when demand is greater than supply.

Batteries are essential for managing energy supply and demand throughout the day. They store extra energy when demand is low and release it when demand is high. They enhance the local power grid's stability during emergencies, preventing blackouts and reducing stress on the power infrastructure.

We currently turn on gas power plants during peak periods such as between 7-9am and 6-8pm. Battery storage will help reduce our reliance on gas power, as more renewable energy can be stored up in anticipation of peak periods.

Battery storage allows us to maximise the potential of renewable energy sources and reduce our dependence on fossil fuel based energy when energy demand is highest. This has financial benefits, such as reducing energy costs, and helps lower greenhouse gas emissions.



# WORKING WITH LOCAL COMMUNITIES

Our batteries will provide huge benefits to the UK, and we take great care to make sure this is not to the detriment of the communities that host them.

We will own and operate Field Beauly throughout its lifetime. As a responsible developer and operator, listening to local communities matters to us, as it allows us to understand and respond to local issues, and ultimately build and operate better battery sites.

We engage early with communities throughout the development process, oversee the construction on-site and we're responsible for the project once it's in operation. We're part of communities for the long-term.

## COMMUNITY BENEFITS

Field is working with the National Schools Partnership (NSP)\* to design a community-based education programme which invites and equips young people to explore the diverse range of careers that exist within the renewable energy sector.

The programme is currently in development and will be initially rolled out to local schools surrounding Field Beauly.

### WHY WE'RE DOING IT

The Highland Council recognises that the renewable energy industry is a future growth sector for the Highlands and offers significant local employment opportunities.\*\*

With 65% of young people stating that they don't understand the skills employers need\*\*\*, Field recognises that educators need support to prepare young people for the jobs of the future.

Field aims to support educators by providing key insights about the diverse types of jobs that exist, the education or training required, and the steps that young people can take to pursue local careers in the renewable energy industry.

### WHEN WILL IT LAUNCH?

The programme will launch across several pilot catchment areas across the Highlands at the end of August, for the start of the new academic term. Depending on feedback, the programme could be rolled out in other areas.

\* The National Schools Partnership is an education network (run by the Brand and Social Impact Agency, We Are Futures) providing free teaching resources to schools across the UK.

\*\* Developing a Strategy to Enable a Future Workforce – A Strong and Fair Economy for all, The Highland Council (2023)

\*\*\* Youth Voice Census Report (2022)

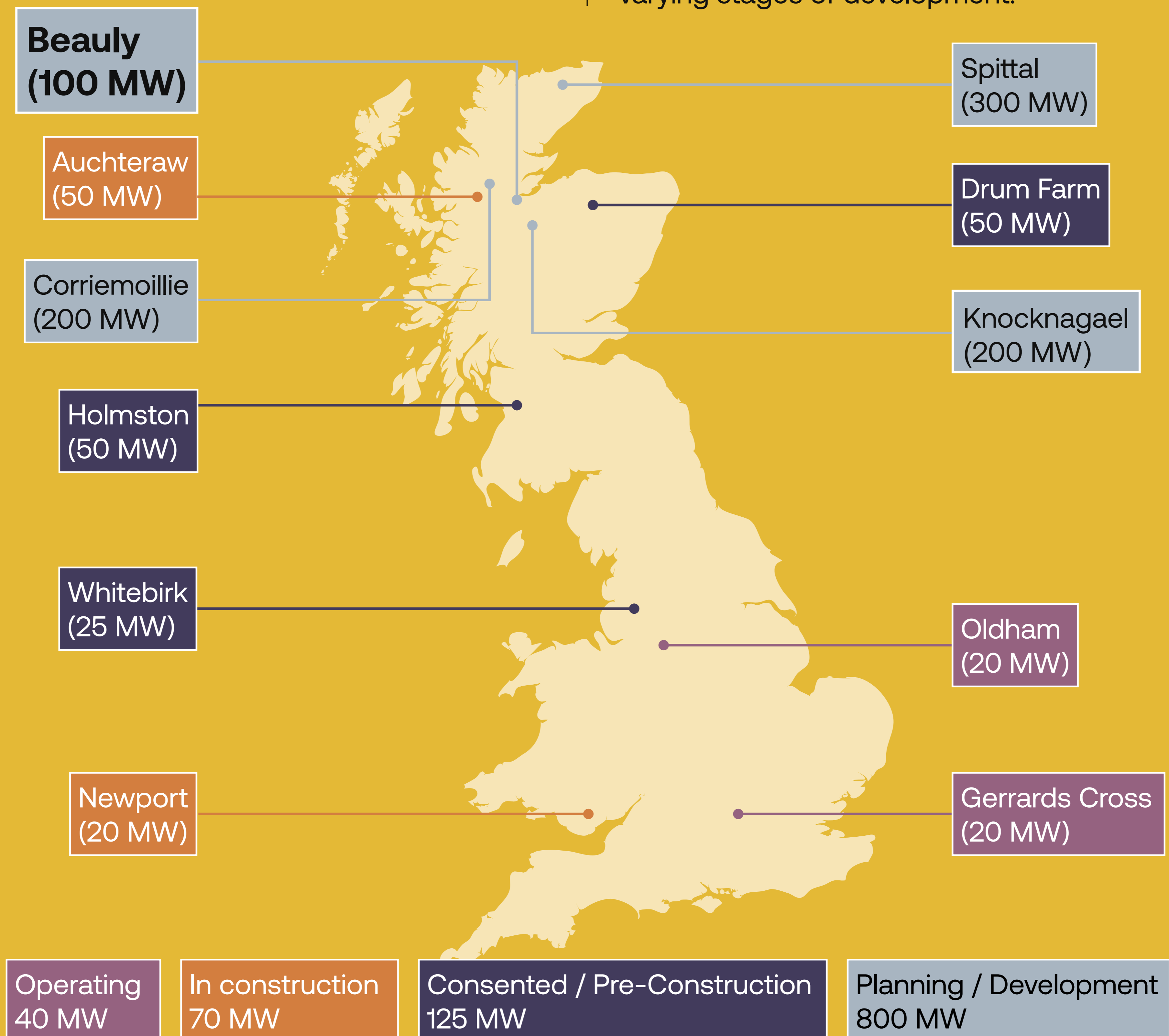
# WHO WE ARE

Field is a leading developer, owner and operator of grid-scale batteries across the UK and Europe. Field's aim is to develop battery projects that reduce climate change emissions, support the stable operation of the electricity grid, and bring down electricity prices for consumers.

We're responsible for all stages of project development, from initial landowner engagement through to concept design, planning, construction and operation. We're committed to designing, building and operating projects that are safe, environmentally sustainable and have as little impact as possible on the communities around them.

We value ongoing engagement with our communities to understand and respond to local perspectives and concerns, and will work with local communities throughout every stage of the project.

Field Beauly would form part of Field's extensive portfolio of battery projects across the UK and Europe. In the UK, we have several projects at varying stages of development:



# FREQUENTLY ASKED QUESTIONS

## **When will Field Beauly be built?**

We will be submitting our planning application to the Energy Consents Unit in Autumn 2024. If we are granted consent, we would look to start construction in 2027 and it will take about two years to complete construction.

## **How will our local community benefit?**

We're currently working with the National Schools Partnership\* to deliver a community-based programme in local schools to help educate students about the work that Field is undertaking in renewable energy and energy storage, as well as encouraging and equipping young people to explore careers in STEM and renewable energy. The Field team will work with local schools to provide information to students about how to build a career in the renewable energy sector.

## **Are battery energy storage sites noisy?**

The main noise associated with batteries are the cooling fans, which keep the batteries from overheating. Noise is measured against existing background noise levels and noise levels are required to meet the relevant British Standards and World Health Organisation Noise Guidelines.

We conduct thorough noise evaluations for each site and implement various noise mitigation measures in our project plans where necessary. These measures, which can include acoustic fencing and bunding, ensure that noise impacts are acceptable at nearby sensitive locations.

## **Will there be any Landscaping on the site?**

The site is located close to both the footpaths along the River Beauly and the A862, the route of the North Coast 500. We understand there are sensitive viewpoints along these routes, and we'll carry out a full landscape and visual assessment to understand potential impacts and how we can best mitigate them.

One way we'll reduce visual impacts is by planting trees and landscaping around the site's perimeter, which will also contribute to biodiversity enhancements through the introduction of species rich grassland and wildflower areas.

We appreciate the significance of these viewpoints and we're open to thoughts or suggestions about how its setting can be protected.

## **Will the project impact local traffic?**

Once operational, the battery will have minimal impact on local traffic, with only occasional visits required for maintenance.

We are proposing to use the existing farm access off of the A862 for the construction and operational traffic. This will be subject to detailed assessment to ensure suitable visibility at the junction and turning radii for the construction vehicles we would require. A Construction Traffic Management Plan will be used to manage construction traffic numbers, vehicle routing and working hours. As with all aspects of the development, we welcome input from the local community to help reduce any impact on local roads where possible.

## **Will the project cause flooding or impact drains?**

Because our projects contain electrically sensitive equipment, flood risk is a key consideration during site selection and project design. We ensure equipment is located outside or above any modelled flood depths, which also ensures there is no increase to flood risk on or off-site.

We'll also build appropriate drainage infrastructure to ensure surface water run-off is managed across the site. These will include sustainable drainage solutions which can collect and discharge water into existing drains at an appropriate run-off rate.

## **Are the batteries safe and what safety measures will you put in place?**

Large batteries are safe facilities. We work hard throughout site design, construction and into operation to ensure the safety of our sites. We only use batteries that have best-in-class fire safety performance and will be compliant with all relevant fire safety standards.

The batteries will be constantly monitored and in the unlikely event that a fire does occur, the facility will employ automatic fire detection and suppression systems.

We are also working with the Scottish Fire and Rescue Service to ensure suitable emergency response procedures are in place, including a Battery Safety Management Plan.

To keep our sites secure, all our projects include perimeter fencing and gated access. During operation, our sites are unmanned and CCTV is used to monitor activities.



# PLANNING APPLICATION

To support our planning application, we are proposing to submit the following documents and assessments:

- Ecology Statement
- Ground Condition Risk Assessment
- Landscape and Visual Impact Assessment
- Flood Risk Assessment / Drainage Strategy
- Noise Impact Assessment
- Archaeology and Cultural Heritage Statement
- Transport Statement and Outline Construction Traffic Management Plan
- Outline Battery Safety Management Plan
- Design Statement
- Planning Statement
- Pre-application Consultation Report.

Following submission, these documents will be available to the public via the Energy Consents Unit's website.

Please note that comments made during this pre-application consultation phase are not representations to the Scottish Ministers. Following submission of the planning application to the Energy Consents Unit, there will be an opportunity to make representations directly to the Scottish Ministers.

## WHAT HAPPENS NEXT?

We're holding a second consultation event at Phipps Hall in Beauly, on Wednesday 21st August 2024. We'll continue accepting feedback via post or email until Friday 30th August 2024.

We'll then integrate your feedback into the final planning application and submit this to the Energy Consents Unit in Summer 2024.

After it's submitted, you will have the opportunity to make a representation about the application to the Scottish Ministers, via the Energy Consents Unit.

## WANT TO KNOW MORE?



For more information, please visit our website at [www.fieldbeauly.co.uk](http://www.fieldbeauly.co.uk)

If you have any questions or you'd like to provide comments, please do not hesitate to email us at [feedback@fieldbeauly.co.uk](mailto:feedback@fieldbeauly.co.uk).